

Parts List

Ref	Var	IPN	Description
C1		018-16100-00	Cap 0603 100n 16v x7r + - 10%
C2		018-16100-00	Cap 0603 100n 16v x7r + - 10%
C3		018-16100-00	Cap 0603 100n 16v x7r + - 10%
C4		018-16100-00	Cap 0603 100n 16v x7r + - 10%
C5		018-16100-00	Cap 0603 100n 16v x7r + - 10%
C6		018-13100-00	Cap 0603 100p 50v NPO ±5%
C12		018-16100-00	Cap 0603 100n 16v x7r + - 10%
D1		001-10099-01	Diode BAV99w Dual Ss
DS1		008-10004-00	LED SMD 0603 Green Ultrabright
DS2		008-10004-00	LED SMD 0603 Green Ultrabright
DS3		008-10004-00	LED SMD 0603 Green Ultrabright
DS4		008-10004-00	LED SMD 0603 Green Ultrabright
DS5		008-10004-00	LED SMD 0603 Green Ultrabright
DS6		008-10004-00	LED SMD 0603 Green Ultrabright
PL1		240-10009-00	Conn SMD 20W ZIF 0.5mm Hor FFC
PL2		240-10009-00	Conn SMD 20W ZIF 0.5mm Hor FFC
Q1		000-10009-00	Xstr Dual NFET/NPN UMF9N SC88
Q2		000-10009-00	Xstr Dual NFET/NPN UMF9N SC88
R1		038-17100-10	Res 0603 1M 1%
R5		038-15470-10	Res 0603 47k 1/10w 1%
R6		038-15180-00	Res 0603 18k 1/10w 5%
R7		038-15470-10	Res 0603 47k 1/10w 1%
R8		038-15470-10	Res 0603 47k 1/10w 1%
R9		038-15470-10	Res 0603 47k 1/10w 1%
R10		038-15470-10	Res 0603 47k 1/10w 1%
R11		038-15470-10	Res 0603 47k 1/10w 1%
R12		038-15180-00	Res 0603 18k 1/10w 5%
R13		038-15180-00	Res 0603 18k 1/10w 5%
R14		038-15470-10	Res 0603 47k 1/10w 1%
R15		038-15180-00	Res 0603 18k 1/10w 5%
R16		038-15180-00	Res 0603 18k 1/10w 5%
R17		038-15180-00	Res 0603 18k 1/10w 5%
R18		038-12220-00	Res 0603 22e 1/16w ± 5%
R19		038-13470-00	Res 0603 470R 1/10w 5%
R20		038-13470-00	Res 0603 470R 1/10w 5%
R21		038-13470-00	Res 0603 470R 1/10w 5%
R22		038-13470-00	Res 0603 470R 1/10w 5%
R23		038-13470-00	Res 0603 470R 1/10w 5%
R24		038-13470-00	Res 0603 470R 1/10w 5%
U1		002-10311-00	IC ADXL311 2G 2Axis Accelerome

Grid Reference Index

Ref	PCB	Circuit
C1	2:D5	1-C2
C2	2:D5	1-B2
C3	2:D4	1-B2
C4	2:B4	1-C3
C5	2:D4	1-D4
C6	2:D4	1-D5
C7	2:B6	1-D7
C8	2:B6	1-D7
C9	2:A6	1-D7
C10	2:B6	1-D7
C11	2:B6	1-D8
C12	2:A6	1-D9
D1	2:D4	1-D5
DS1	1:B4	1-C5
DS2	1:B6	1-C5
DS3	1:D6	1-C6
DS4	1:C4	1-C6
DS5	1:C2	1-C6
DS6	1:B2	1-C7
FPL_TEMP	2:D4	1-D5
PL1	2:B7	1-D10
PL2	2:B3	1-D2
Q1	2:C5	1-C3
		1-B3
Q2	2:C4	1-B3
		1-A3
R1C2	1:C1	1-F5
R1C4	1:D2	1-F6
R1C1	1:D1	1-F5
R1C3	1:A1	1-F6
R1	2:D4	1-B1
R2C2	1:A2	1-F5
R2	2:D5	1-B3
R2C3	1:D3	1-F6
R2C1	1:C2	1-F5
R2C4	1:C3	1-F6
R3C4	1:D6	1-E6
R3C3	1:A4	1-E6
R3C1	1:A3	1-E5
R3C2	1:C4	1-E5
R3	2:D4	1-B3
R4	2:B4	1-D4
R4C3	1:D4	1-E6
R4C1	1:C5	1-E5
R4C4	1:A6	1-E6
R4C2	1:C6	1-E5
R5	2:C4	1-B4
R6	2:C4	1-B4
R7	2:C4	1-A4
R8	2:C4	1-B4
R9	2:A4	1-G5
R10	2:A4	1-G6
R11	2:B4	1-G6
R12	2:B6	1-D6
R13	2:B6	1-D7
R14	2:B4	1-G7
R15	2:A6	1-D7
R16	2:B6	1-D7
R17	2:B6	1-D8
R18	2:A6	1-D8
R19	2:A4	1-C5
R20	2:A6	1-C5
R21	2:D5	1-C6
R22	2:D4	1-C6
R23	2:C4	1-C6
R24	2:C4	1-C7
TP1	2:E3	1-B6
U1	2:D4	1-B2

TP9100 portables

Front-Panel Interface Board PCB Information



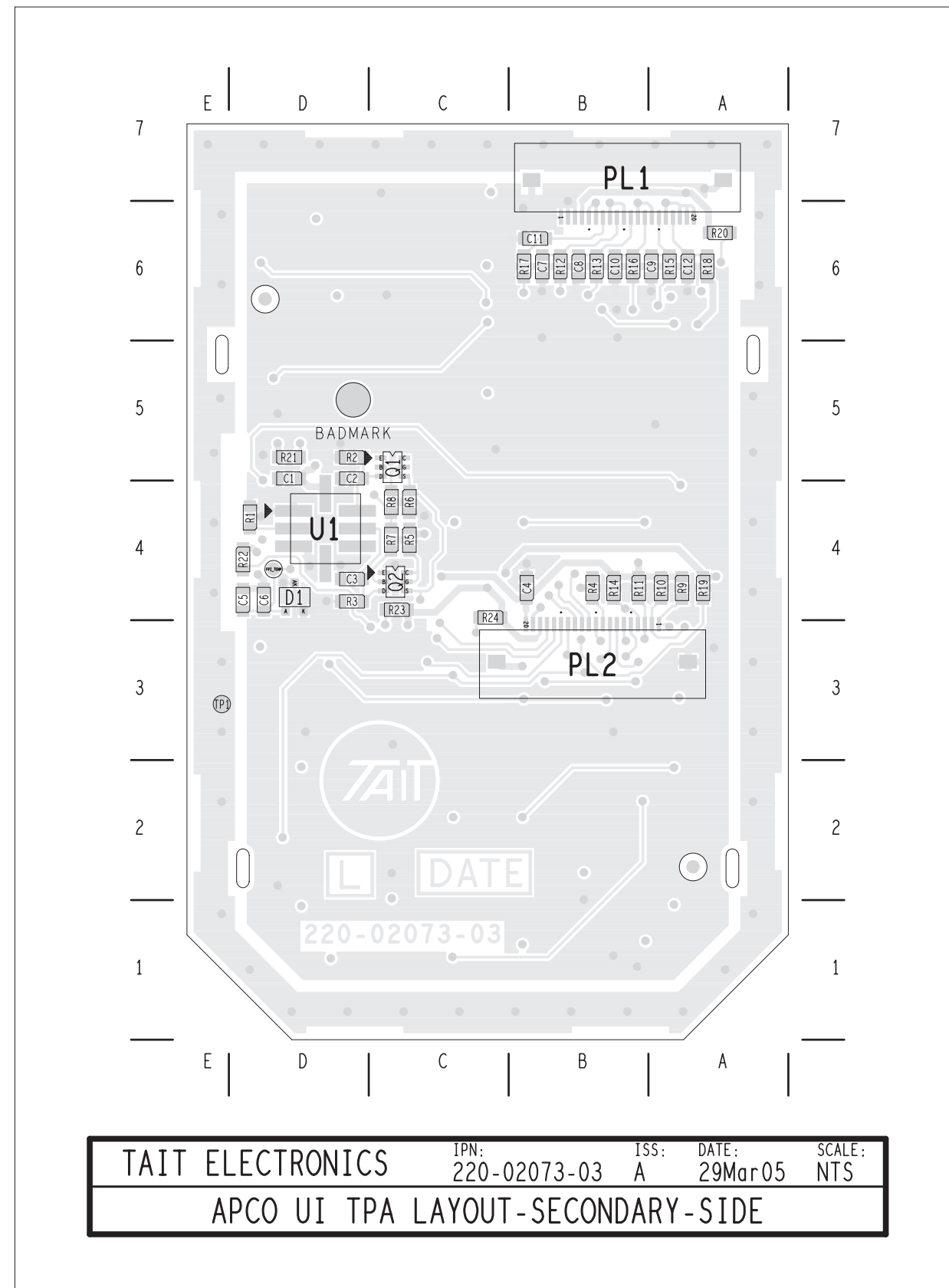
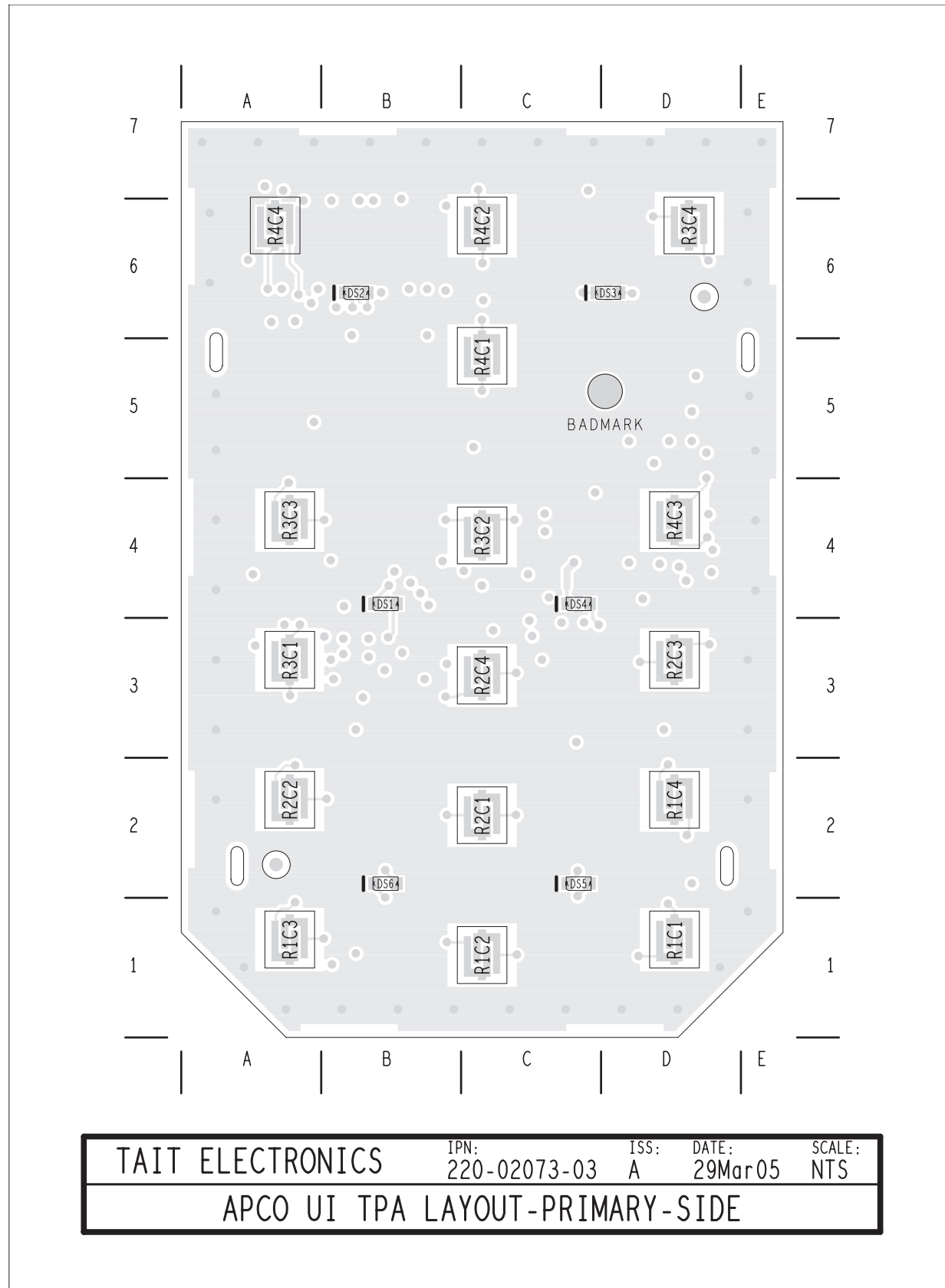
PCB IPN 220-02073-03

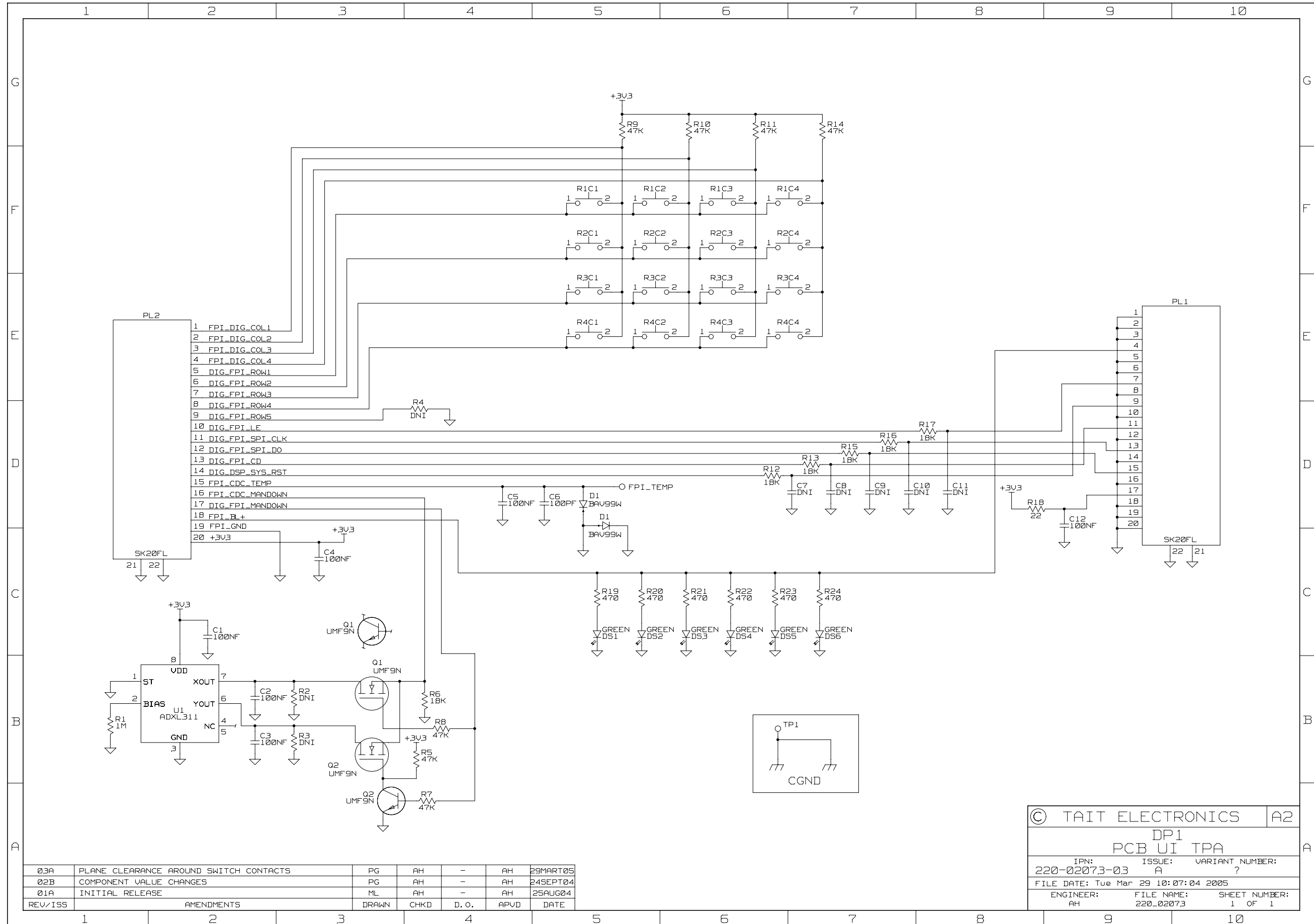
This document applies to the TP9100 front panel interface board.

This document contains the following information:

- Parts List (Rev. 5) Page 1
- Grid Reference Index Page 1
- PCB Layout Page 2
- Circuit Diagram Page 3

The component values in the circuit diagrams are indicative only. Refer to the parts list for actual values used.





03A	PLANE CLEARANCE AROUND SWITCH CONTACTS	PG	AH	-	AH	29MART05
02B	COMPONENT VALUE CHANGES	PG	AH	-	AH	24SEPT04
01A	INITIAL RELEASE	ML	AH	-	AH	25AUG04
REV/ISS	AMENDMENTS	DRAWN	CHKD	D. O.	APVD	DATE

© TAIT ELECTRONICS		A2
DP1 PCB UI TPA		
IPN: 220-02073-03	ISSUE: A	VARIANT NUMBER: ?
FILE DATE: Tue Mar 29 10:07:04 2005		
ENGINEER: AH	FILE NAME: 220_02073	SHEET NUMBER: 1 OF 1